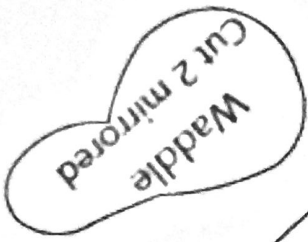
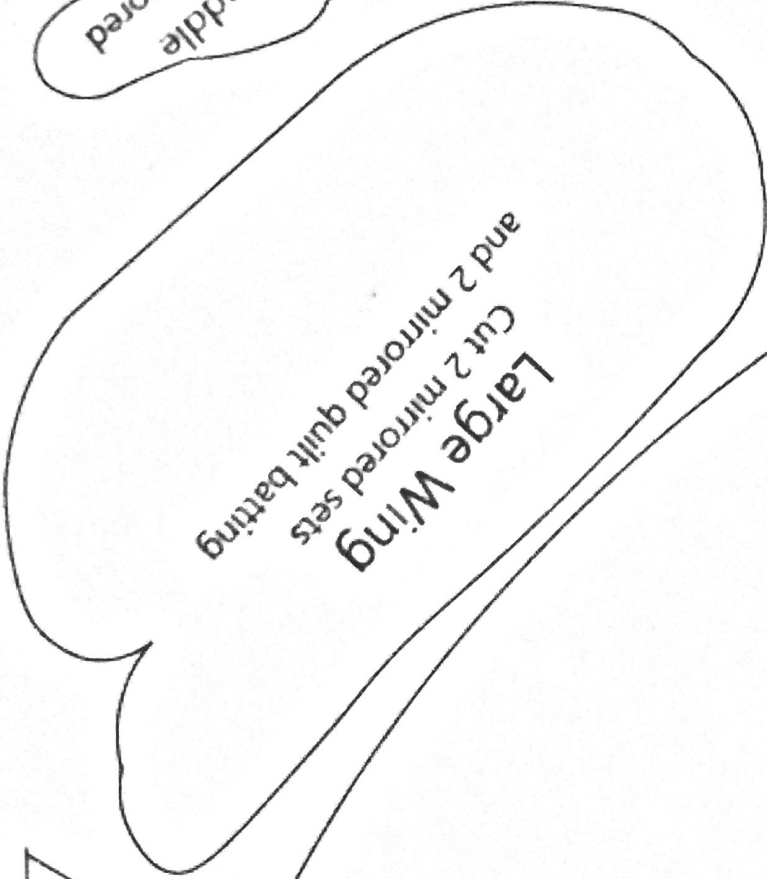


Comb  
Cut 2 mirrored



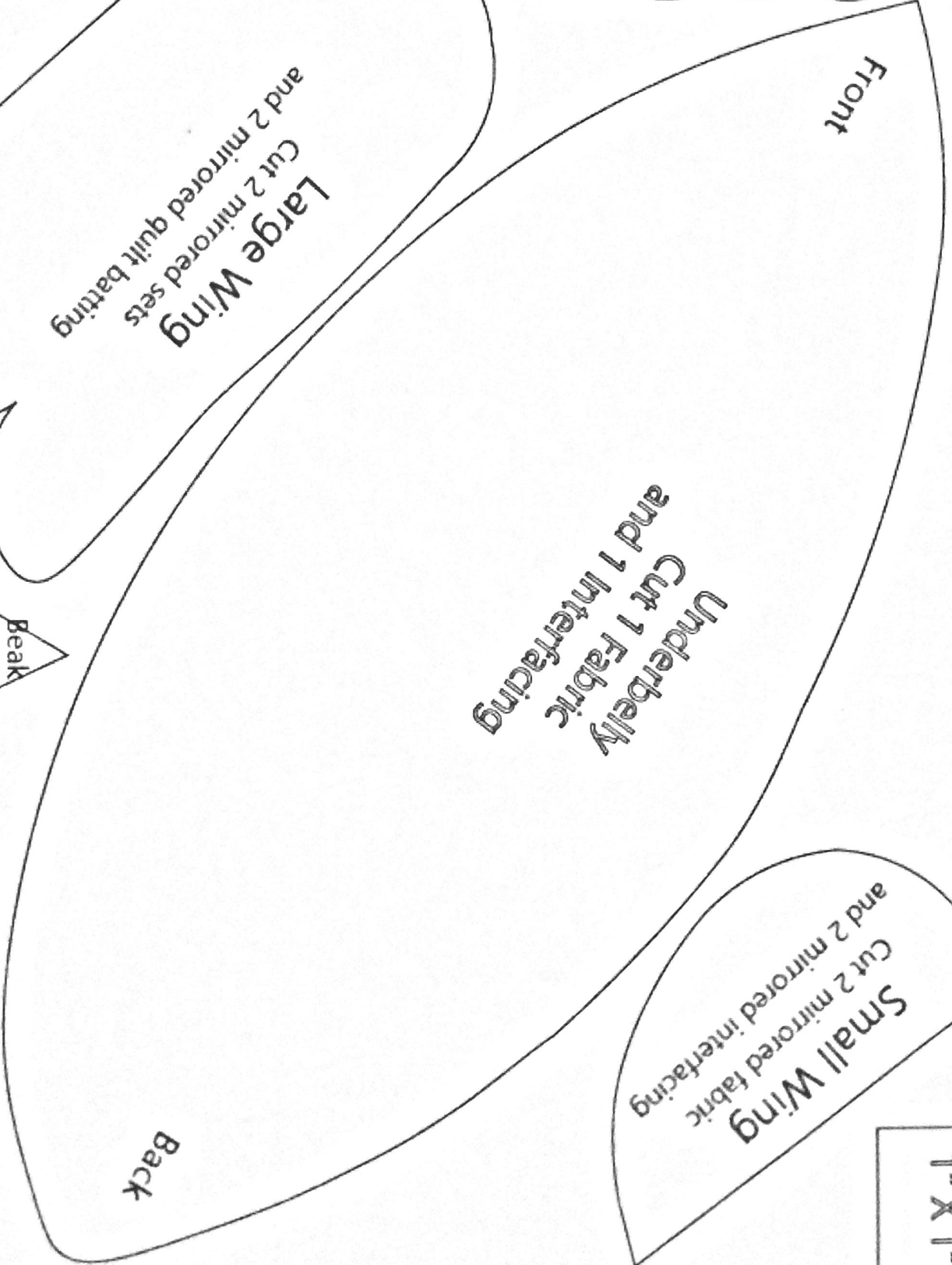
Waddle  
Cut 2 mirrored



Large Wing  
Cut 2 mirrored sets  
and 2 mirrored quilt batting



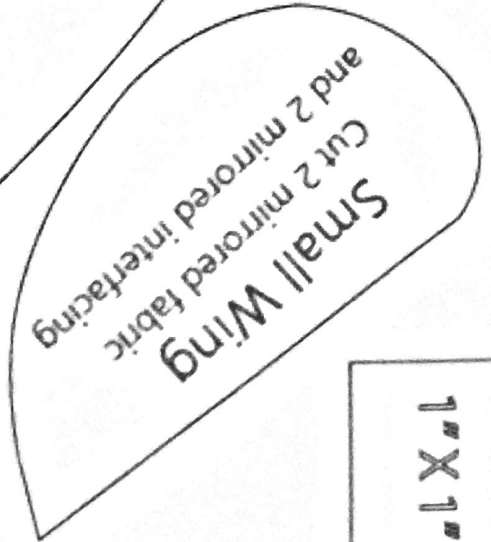
Beak  
Cut 2  
mirrored



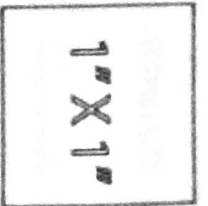
Front

Underbelly  
Cut 1 fabric  
and 1 interfacing

Back



Small Wing  
Cut 2 mirrored fabric  
and 2 mirrored interfacing



1" X 1"