

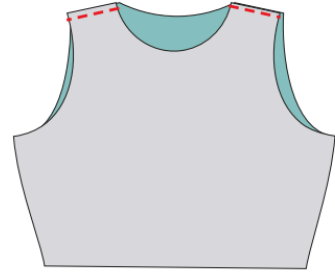


5 OUT OF 4 PATTERNS

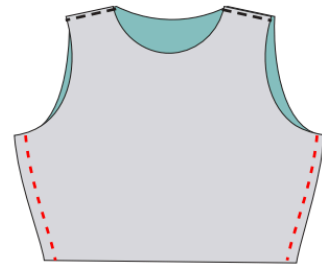
Sewing School: Installing Clear Elastic Adding the Neckband of Fully Lined Bodice

Bodice

1. Place MAIN fabric Front and Back Bodices Right Sides Together. Pin shoulders and sew using a stretch stitch or serger.
Repeat with LINING fabric.



2. Match side seams of MAIN fabric Front and Back Bodices Right Sides Together and sew using a stretch stitch or serger. Repeat with other side.
Repeat with LINING fabric.



3. Place Main Bodice and Lining Bodice Right Sides Together, lining up neckline. Sew around the neckline* using a stretch stitch and adding clear elastic. To do this, pin/tape 1/4" clear elastic to the seam allowance on the **BODICE SIDE**. Hold elastic firmly, but **without stretching it**. Guide it into place as you sew using a stretch stitch, serger, or zig zag, getting as close to the inside edge of the elastic as you can. Trim excess elastic from end.

You can do the application of clear elastic in two steps if you would like by first sewing the seam and then adding the elastic in a separate step.

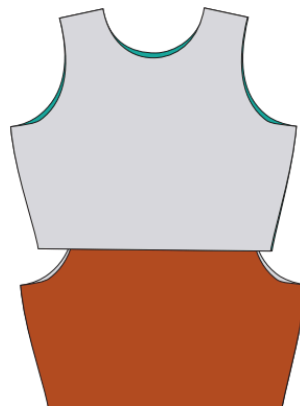
*If doing a V-neck, I HIGHLY suggest using a sewing machine for at least 1" on either side of the V and clipping the seam allowance at the V.



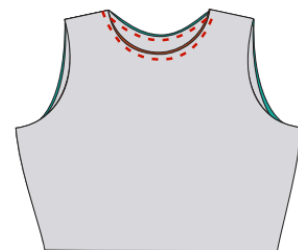
Main Fabric



Lining Fabric



Put Lining Bodice in-
side Main Bodice Right



Sew around the
neckline.